

Government of India
Ministry of Earth Sciences
India Meteorological Department



Press Release

Date: 26th August, 2024

Time of Issue: 1345 hours IST

- Subject: (i) Deep Depression over East Rajasthan likely to continue to move slowly west-southwestwards and reach Saurashtra & Kutch and adjoining northeast Arabian Sea by 29th August.**
- (ii) Well Marked Low pressure area over Gangetic West Bengal likely to move west-northwestwards across East India.**
- (iii) Very heavy to extremely heavy rainfall likely over South Rajasthan, Gujarat State, Konkan & Goa, Madhya Maharashtra and Coastal Karnataka during next 2-3 days.**

Realised weather during past 24 hours till 0830 hours IST of today (Annexure I)

Heavy to very heavy rainfall with extremely heavy falls at isolated places over Gujarat Region, East Rajasthan, Saurashtra & Kutch, Madhya Maharashtra; **Heavy to very heavy rainfall** at isolated places over West Madhya Pradesh, Coastal Karnataka, Konkan & Goa, South Interior Karnataka, Jharkhand; **Heavy rainfall** at isolated places over Chhattisgarh, West Rajasthan, Tamil Nadu, North Interior Karnataka, Coastal Andhra Pradesh & Yanam, Gangetic West Bengal.

Weather Systems:

(a) Deep Depression over East Rajasthan

The deep depression over East Rajasthan and adjoining west Madhya Pradesh moved west-southwestwards with a speed of 8 kmph during past 6 hours and lay centered at 0830 hours IST of today, the 26th August over East Rajasthan near latitude 24.1°N and longitude 74.0°E, about 60 km south-southeast of Udaipur (East Rajasthan), 180 km east of Deesa (Gujarat) and 180 km northeast of Ahmedabad (Gujarat). It is likely to continue to move slowly west-southwestwards across south Rajasthan and Gujarat region and reach Saurashtra & Kutch and adjoining areas of Pakistan and northeast Arabian Sea by morning of 29th August.

(b) Well Marked Low Pressure Area over Gangetic West Bengal

The well marked low pressure area over Gangetic West Bengal persisted over the same region at 0830 hours IST of today, the 26th August 2024. It is likely to move west-northwestwards across Gangetic West Bengal, Jharkhand and adjoining north Odisha during next 2 days.

(c) Western end of the monsoon trough at mean sea level is south of its normal position while the eastern end is at its normal position and likely to continue to be so during next 3-4 days.

Forecast & Warnings (upto 7 days):

❖ West & Central India (For District wise Extremely heavy rainfall warning maps of Madhya Pradesh, Gujarat State and Rajasthan State valid for 26th to 30th August, refer figures. 1-3 in pages 8-9)

- ✓ Fairly widespread to widespread light/moderate rainfall very likely over West & Central India during the week.
- ✓ Isolated **heavy rainfall** very likely over Chhattisgarh on 26th, 29th, 30th August & 01st September; East Madhya Pradesh on 26th, 29th August-01st; Konkan & Goa during 28th August-01st September; Madhya Maharashtra during 29th August -01st September; Gujarat Region on 29th & 30th; Vidarbha on 29th & 30th; Saurashtra & Kutch on 30th August.
- ✓ Isolated **very heavy rainfall** also very likely over West Madhya Pradesh on 26th; Konkan & Goa on 26th & 27th; ghat areas of Madhya Maharashtra on 27th & 28th; Gujarat Region on 28th; Saurashtra & Kutch on 29th; Vidarbha & Chhattisgarh on 31st August.
- ✓ Isolated **extremely heavy rainfall also very likely** over north Madhya Maharashtra on 26th; Saurashtra & Kutch during 26th -28th; Gujarat Region on 26th & 27th August.

❖ East & Northeast India

- ✓ Fairly widespread to widespread light/moderate rainfall very likely over East & Northeast India, during the week.
- ✓ Isolated **heavy rainfall** very likely over Sub-Himalayan West Bengal & Sikkim on 26th; Bihar during 26th -28th; Odisha during 26th -29th; Gangetic West Bengal on 26th; Jharkhand on 26th; Andaman & Nicobar Islands on 27th, 29th & 30th; Gangetic West Bengal on 27th; Nagaland, Manipur, Mizoram & Tripura during 26th August - 01st September; Jharkhand on 27th & 28th; Arunachal Pradesh on 28th; Assam & Meghalaya 27th -29th August.
- ✓ Isolated **very heavy rainfall** also very likely over Andaman Islands on 28th; Odisha on 30th August.

❖ South Peninsular India:

- ✓ Scattered to Fairly widespread light/moderate rainfall very likely over Kerala & Mahe, Lakshadweep, Coastal Andhra Pradesh & Yanam, Coastal Karnataka, Interior Karnataka; isolated to scattered rainfall over Tamil Nadu, Puducherry & Karaikal, Rayalaseema & Telangana during the week.
- ✓ Isolated **heavy rainfall** very likely over Kerala & Mahe during 26th August -01st September; Coastal Andhra Pradesh & Yanam during 26th & 29th; North Interior Karnataka during 26th -30th; South Interior Karnataka during 27th -30th; Telangana during 29th-31st; Coastal Karnataka on 31st August & 01st September.
- ✓ Isolated **very heavy rainfall** also very likely over South Interior Karnataka on 26th; Coastal Karnataka during 26th -30th; North Coastal Andhra Pradesh on 30th & 31st August.

❖ Northwest India

- ✓ Fairly widespread to widespread light/moderate rainfall very likely over Himachal Pradesh, Uttarakhand, Rajasthan; isolated to scattered rainfall over Jammu-Kashmir-Ladakh-Gilgit-Baltistan-Muzaffarabad, Punjab, Uttar Pradesh Haryana-Chandigarh-Delhi during the week.
- ✓ Isolated **heavy rainfall** very likely over Uttarakhand on 26th; East Uttar Pradesh on 26th & 27th; Jammu-Kashmir-Ladakh-Gilgit-Baltistan-Muzaffarabad during 27th -29th; Punjab during 27th & 28th; West Rajasthan 29th August-01st September.
- ✓ Isolated **very heavy rainfall** also very likely over South West Rajasthan 27th & 28th; East Rajasthan on 27th August.

- ✓ Isolated **extremely heavy rainfall also very likely** over south Rajasthan on 26th August.

For more details, kindly refer: https://mausam.imd.gov.in/responsive/all_india_forecast_bulletin.php

For Districtwise warnings refer: <https://mausam.imd.gov.in/responsive/districtWiseWarningGIS.php>

Wind warning:

- Strong surface wind speed reaching 30-40 kmph gusting to 50 kmph is very likely to prevail over Madhya Pradesh on 26th August.
- Strong surface wind speed reaching 40-50 kmph gusting to 60 kmph is very likely to prevail over South Rajasthan on 26th and 27th August.
- Strong surface wind speed reaching 40-50 kmph gusting to 60 kmph is very likely over Gujarat state, along and off Gujarat & adjoining Pakistan and north Maharashtra coasts and northeast Arabian Sea during 26th – 28th August.
- Squally wind speed reaching 55-65 kmph gusting to 75 kmph is likely to prevail along & off Gujarat & adjoining Pakistan coasts and northeast and adjoining eastcentral Arabian Sea on 29th and 30th August. Squally wind speed reaching 40-50 kmph gusting to 60 kmph would prevail over interior districts of Gujarat state on 29th August.
- Squally wind speed reaching 40-50 kmph gusting to 60 kmph is likely to prevail along and off north Maharashtra coasts on 28th & 29th August.

Fisherman warning:

- Fishermen are advised not venture into Northeast & adjoining Eastcentral Arabian Sea and along & off Gujarat & adjoining Pakistan and north Maharashtra Coasts till 30th August.
- Fishermen are advised not to venture into North Bay of Bengal and along & off North Odisha, West Bengal, Bangladesh coasts on 26th August.

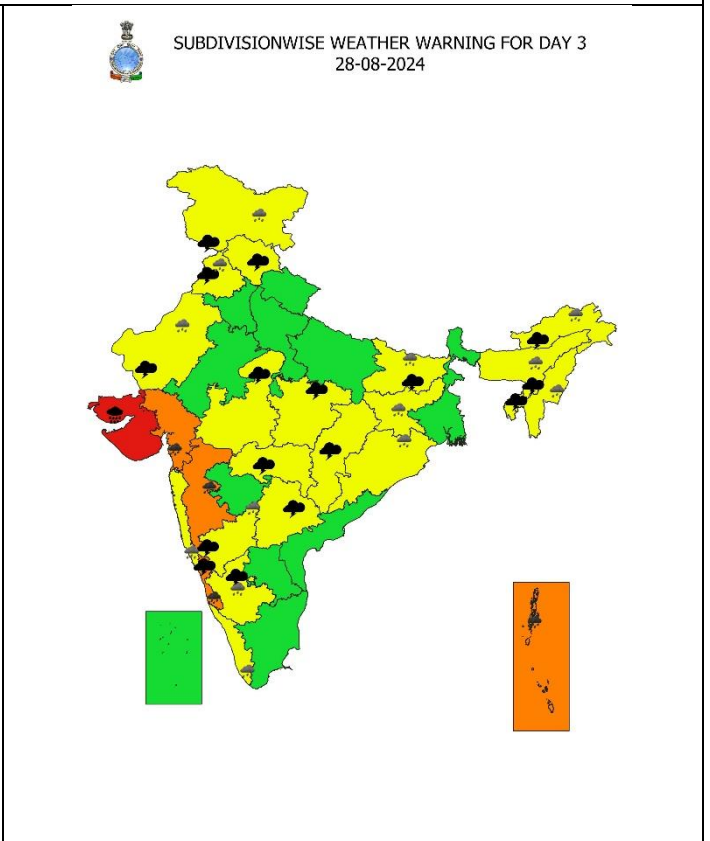
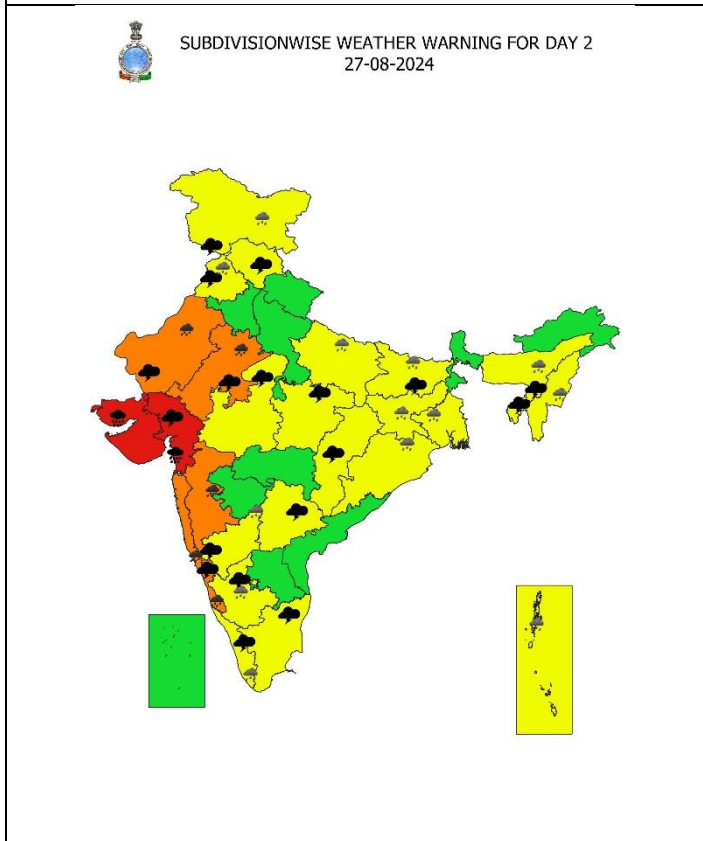
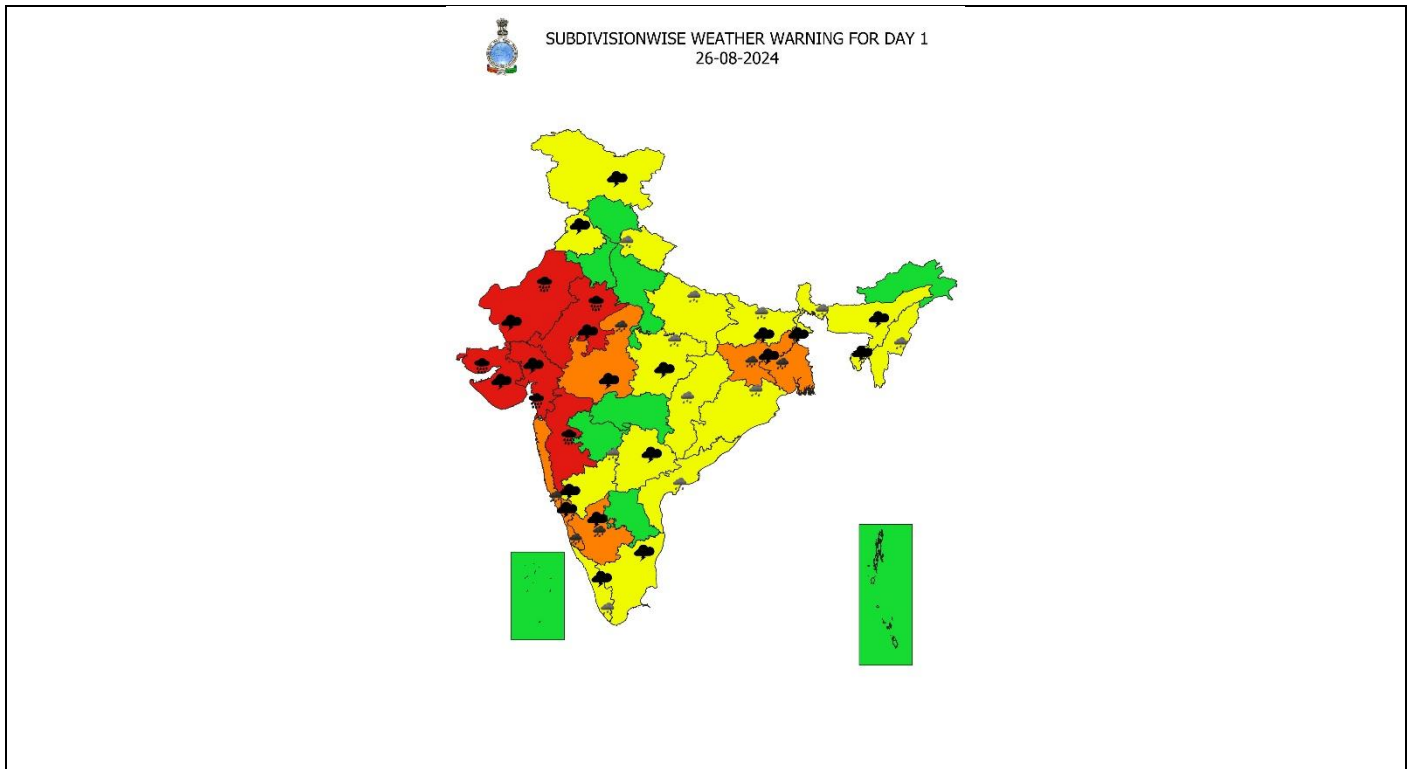
For more details, kindly refer to National bulletin on: <https://rsmcnewdelhi.imd.gov.in/>

Significant Rainfall recorded during past 24 hours till 0830 hours IST of today 26.08.2024 (in cm):

- ❖ **Gujarat Region:** Khergam (dist Navsari) 35, Dangs (ahwa) (dist Dangs) 29, Waghai (dist Dangs) 26, Dang_kvks Aws (dist Dangs) 24, Kaprada (dist Valsad) 23, Santrampur (dist Mahisagar) 23, Dharampur (dist Valsad) 23, Subir (dist Dangs) 22, Shahera (dist Panchmahal) 21, Ukai (dist Surat) 20, Vansda (dist Navsari) 20, Madhbun (dist Dadara & Nagar Haveli) 20, Nadiad (dist Kheda) 19, Valsad_Kvk Aws (dist Valsad) 18, Nandod (dist Narmada) 18, Dediapada (dist Narmada) 18, Fatepura (dist Dahod) 17, Kukarmunda (dist Tapi) 17, Khanvel (dist Dadara & Nagar Haveli) 17, Mahudha (dist Kheda) 17, Sagbara (dist Narmada) 16, Kadana (dist Mahisagar) 16, Anand (dist Anand) 16, Karjan (dist Vadodara) 16, Quant (dist Chhota Udepur) 15, Dahod (dist Dahod) 15, Narmada_kvks Aws (dist Narmada) 15, Silvassa (dist Dadara & Nagar Haveli) 15, Modasa (dist Aravalli) 14,
- ❖ **East Rajasthan:** Pipalkhunt Sr (dist Pratapgarh) 26, Bhungra Sr (dist Banswara) 19, Banswara Sr (dist Banswara) 19, Sallopat Sr (dist Banswara) 16, Bagidora Sr (dist Banswara) 15, Arthuna (dist Banswara) 15, Garhi (dist Banswara) 15, Sajjangarh Sr (dist Banswara) 15, Pratapgarh (dist Pratapgarh) 13, Kesarpura Sr (dist Banswara) 13, Chikali Sr (dist Dungarpur) 13, Danpur (dist Banswara) 13, Loharia (dist Banswara) 11, Shergarh Sr (dist Banswara) 11, Arnod Sr (dist Pratapgarh) 11, Sabla Sr (dist Dungarpur) 10,
- ❖ **Madhya Maharashtra:** Surgana (dist Nashik) 24, Dhadgaon/akrani- Hydro (dist Nandurbar) 19, Radhanagari (dist Kolhapur) 16, Peth (dist Nashik) 16, Mahabaleshwar- Imd Obsy (dist Satara) 14, Lonavala_agri (dist Pune) 13, Trimbakshwar (dist Nashik) 12, Igatpuri (dist Nashik) 11, Taloda (dist Nandurbar) 11, Bhor (dist Pune) 10,
- ❖ **Saurashtra & Kutch:** Rajkot (dist Rajkot) 23, Muli (dist Surendranagar) 21, Chotila (dist Surendranagar) 21, Wankaner (dist Morbi) 20, Halvad (dist Morbi) 18, Paddhari (dist Rajkot) 17, Thangadh (dist Surendranagar) 14, Surendranagar (dist Surendranagar) 14, Wadhvan (dist Surendranagar) 13, Surendranagar_aws (dist Surendranagar) 11, Dhrangadhra (dist Surendranagar) 11, Sayla (dist Surendranagar) 11, Lodhika (dist Rajkot) 10,
- ❖ **West Madhya Pradesh:** Alirajpur (dist Alirajpur) 19, Malhargarh (dist Mandsaur) 15, Pansemal (dist Barwani) 13, Jaora (dist Ratlam) 12, Kathiwada (dist Alirajpur) 12, Raoti (dist Ratlam) 12, Jawad (dist Neemuch) 11, Shamshabad (dist Vidisha) 11, Sailana (dist Ratlam) 10, Mandsaur-aws (dist Mandsaur) 10, Neemuch-aws (dist Neemuch) 10,
- ❖ **Coastal Karnataka:** Castle Rock (dist Uttara Kannada) 16, Kadra (dist Uttara Kannada) 8,
- ❖ **Konkan & Goa:** Palghar_agri (dist Palghar) 15, Jawhar (dist Palghar) 15, Vikramgad (dist Palghar) 13, Wada (dist Palghar) 13, Talasari (dist Palghar) 12, Dahanu - Imd Obsy (dist Palghar) 12, Mangaon (dist Raigad) 11, Kankavli (dist Sindhudurg) 11, Valpoi (dist North Goa) 11, Mahad (dist Raigad) 10, Ponda (dist North Goa) 10, Mhasla (dist Raigad) 10, Matheran (dist Raigad) 10,
- ❖ **South Interior Karnataka:** Ponnampet Pwd (dist Kodagu) 14, Kottigehara (dist Chikkamagaluru) 12,
- ❖ **Jharkhand:** Maheshpur (dist Pakur) 12;
- ❖ **Chhattisgarh:** Sukma (dist Sukma) 10,
- ❖ **Gangetic West Bengal:** Mo Saltlake (dist North 24 Parganas) 9, Kharidwar (dist Purulia) 8, Diamond Harbour (dist South 24 Parganas) 7
- ❖ **West Rajasthan:** Jaitran (dist Pali) 7,
- ❖ **Tamil Nadu:** Taluk Office Pandalur (dist The Nilgiris) 7,
- ❖ **North Interior Karnataka:** Londa (dist Belagavi) 7,
- ❖ **Coastal Andhra Pradesh:** Chodavaram (dist Anakapalli) 7,

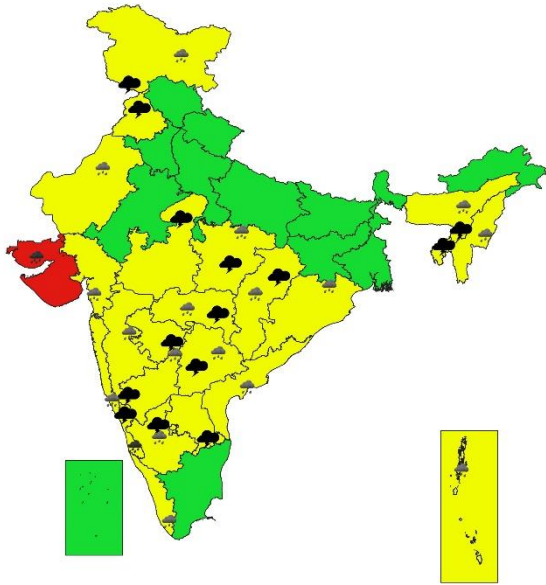
7 Days Rainfall Forecast								
S. No.	Subdivision	26-Aug	27-Aug	28-Aug	29-Aug	30-Aug	31-Aug	01-Sep
		Day 1	Day 2	Day 3	Day 4	Day 5	Day 6	Day 7
1	ANDAMAN & NICOBAR ISLANDS	WS	WS	WS	WS	WS	WS	WS
2	ARUNACHAL PRADESH	SCT	SCT	FWS	SCT	SCT	SCT	SCT
3	ASSAM & MEGHALAYA	FWS	SCT	SCT	FWS	FWS	FWS	FWS
4	NAGALAND, MANIPUR, MIZORAM & TRIPURA	FWS	FWS	FWS	FWS	FWS	FWS	FWS
5	SUB-HIMALAYAN WEST BENGAL & SIKKIM	FWS	FWS	SCT	SCT	SCT	FWS	FWS
6	GANGETIC WEST BENGAL	WS	WS	FWS	FWS	FWS	FWS	SCT
7	ODISHA	FWS	FWS	FWS	FWS	WS	WS	FWS
8	JHARKHAND	WS	WS	FWS	FWS	SCT	SCT	SCT
9	BIHAR	FWS	FWS	FWS	SCT	SCT	SCT	SCT
10	EAST UTTAR PRADESH	FWS	SCT	SCT	SCT	SCT	ISOL	ISOL
11	WEST UTTAR PRADESH	SCT	SCT	SCT	ISOL	ISOL	ISOL	ISOL
12	UTTARAKHAND	SCT	FWS	FWS	SCT	SCT	ISOL	SCT
13	HARYANA CHANDIGARH & DELHI	SCT	SCT	SCT	ISOL	ISOL	ISOL	ISOL
14	PUNJAB	ISOL	ISOL	SCT	ISOL	ISOL	SCT	ISOL
15	HIMACHAL PRADESH	FWS	FWS	FWS	FWS	FWS	SCT	SCT
16	JAMMU & KASHMIR AND LADAKH	FWS	FWS	WS	WS	FWS	ISOL	ISOL
17	WEST RAJASTHAN	FWS	FWS	SCT	ISOL	ISOL	SCT	SCT
18	EAST RAJASTHAN	WS	FWS	SCT	SCT	SCT	FWS	FWS
19	WEST MADHYA PRADESH	WS	SCT	SCT	FWS	FWS	WS	WS
20	EAST MADHYA PRADESH	WS	FWS	FWS	FWS	WS	WS	WS
21	GUJARAT REGION	WS	WS	WS	WS	WS	WS	WS
22	SAURASHTRA & KUTCH	WS	WS	WS	WS	WS	WS	WS
23	KONKAN & GOA	WS	WS	WS	WS	WS	WS	WS
24	MADHYA MAHARASHTRA	WS	WS	FWS	FWS	FWS	FWS	FWS
25	MARATHAWADA	SCT	SCT	SCT	SCT	SCT	FWS	FWS
26	VIDARBHA	FWS	FWS	FWS	FWS	WS	WS	WS
27	CHHATTISGARH	FWS	FWS	FWS	WS	WS	WS	WS
28	COASTAL ANDHRA PRADESH & YANAM	SCT	SCT	SCT	FWS	WS	FWS	SCT
29	TELANGANA	SCT	ISOL	ISOL	FWS	SCT	SCT	SCT
30	RAYALASEEMA	ISOL	ISOL	ISOL	SCT	FWS	SCT	ISOL
31	TAMILNADU PUDUCHERRY & KARAIKAL	ISOL	ISOL	ISOL	ISOL	ISOL	ISOL	ISOL
32	COASTAL KARNATAKA	WS	WS	WS	WS	WS	WS	WS
33	NORTH INTERIOR KARNATAKA	SCT	SCT	FWS	FWS	SCT	SCT	SCT
34	SOUTH INTERIOR KARNATAKA	SCT	ISOL	SCT	FWS	FWS	SCT	SCT
35	KERALA & MAHE	FWS	FWS	FWS	WS	WS	WS	FWS
36	LAKSHADWEEP	SCT	SCT	SCT	FWS	FWS	FWS	FWS

- As the lead period increases forecast accuracy decreases.

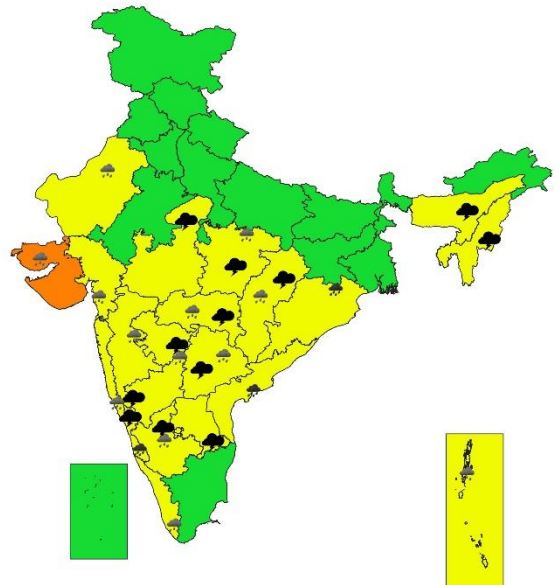




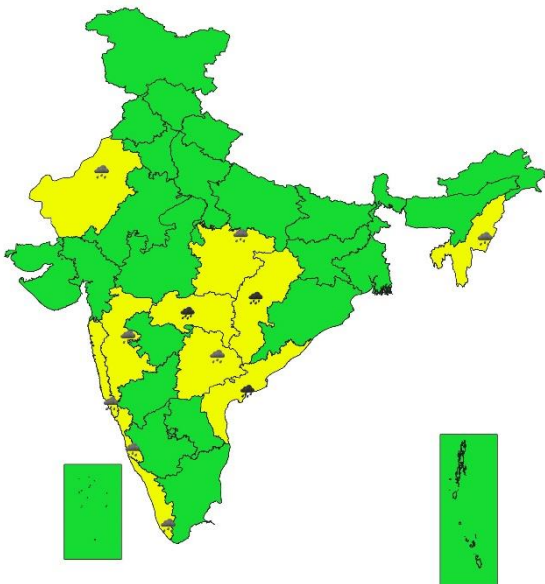
SUBDIVISIONWISE WEATHER WARNING FOR DAY 4
29-08-2024



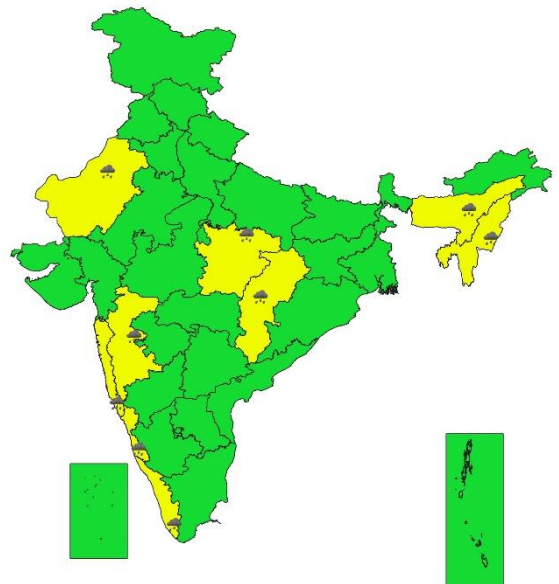
SUBDIVISIONWISE WEATHER WARNING FOR DAY 5
30-08-2024



SUBDIVISIONWISE WEATHER WARNING FOR DAY 6
31-08-2024



SUBDIVISIONWISE WEATHER WARNING FOR DAY 7
01-09-2024



- Action may be taken based on ORANGE AND RED COLOUR warnings.
- Vulnerable regions likely urban and hilly areas action may be initiated for heavy rainfall warning.
- As the lead period increases forecast accuracy decreases.

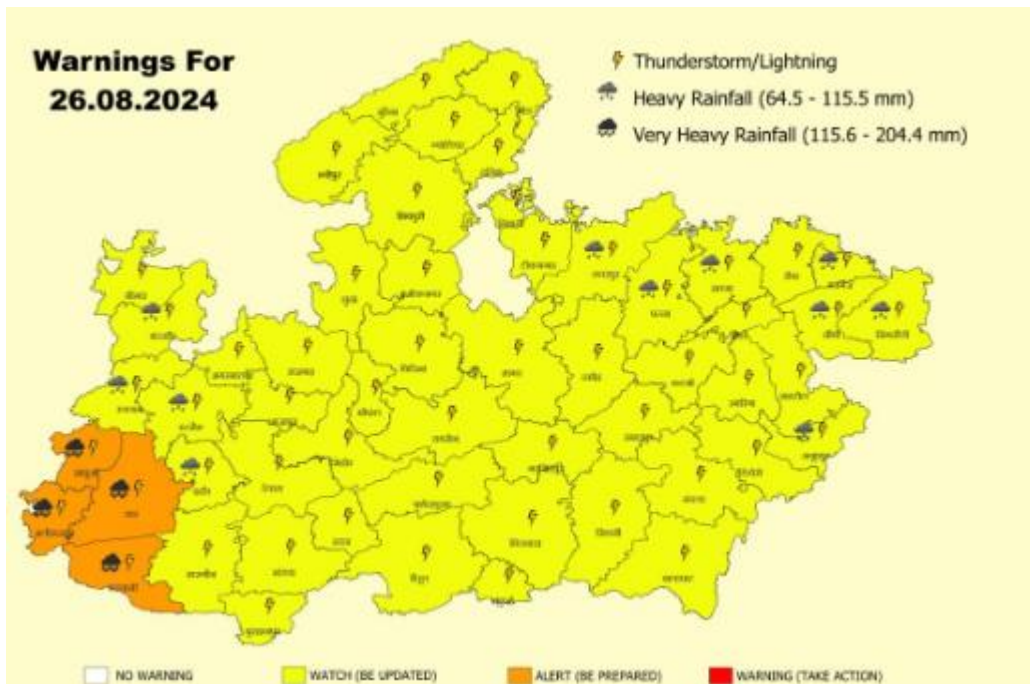


Fig. 1 District wise warning maps of Madhya Pradesh valid for 26th August

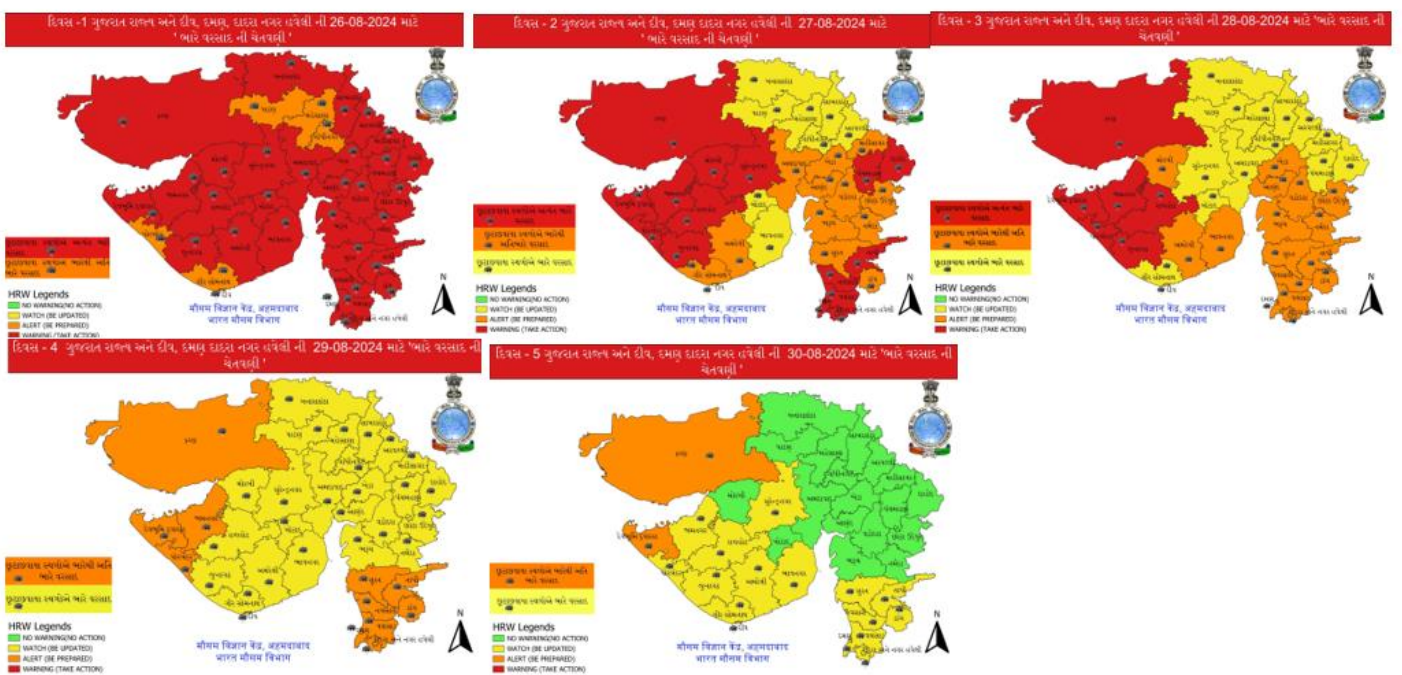


Fig. 2 District wise warning maps of Gujarat State valid for 26th to 30th August

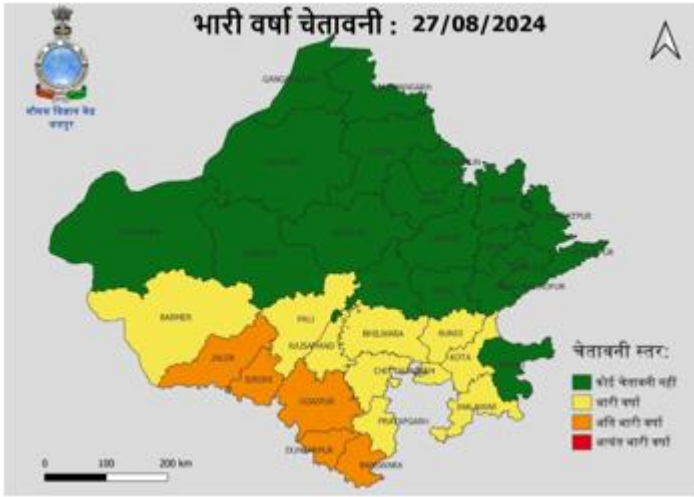


Fig. 3 District wise warning maps of Rajasthan State valid for 26th & 27th August

Impact due to

- ✓ **Isolated extremely heavy rainfall very likely over** north Madhya Maharashtra on 26th; Saurashtra & Kutch during 26th -28th; Gujarat Region on 26th & 27th ; south Rajasthan on 26th August.
 - ✓ **Very heavy rainfall** at isolated over West Madhya Pradesh on 26th; Konkan & Goa on 26th & 27th; ghat areas of Madhya Maharashtra on 27th & 28th; Gujarat Region on 28th; Saurashtra & Kutch on 29th; Vidarbha & Chhattisgarh on 31st; Andaman Islands on 28th; Odisha on 30th; South Interior Karnataka on 26th; Coastal Karnataka during 26th -30th; North Coastal Andhra Pradesh on 30th & 31st; South West Rajasthan 27th & 28th; East Rajasthan on 27th August.
 - ✓ **High flash flood risk likely over** likely over Rajasthan, Gujarat Region, Madhya Maharashtra, West Madhya Pradesh; **Low to Moderate flash flood risk** likely over Coastal Karnataka, Konkan & Goa on 26th & 27th August. **(ANNEXURE IV)**
- ✓ Localized Flooding of roads, water logging in low lying areas and closure of underpasses mainly in urban areas of the above region.
 - ✓ Occasional reduction in visibility due to heavy rainfall.
 - ✓ Disruption of traffic in major cities due to water logging in roads leading to increased travel time.
 - ✓ Minor damage to kutch roads.
 - ✓ Possibilities of damage to vulnerable structure.
 - ✓ Localized Landslides/Mudslides/landslips/mud slips/land sinks/mud sinks.
 - ✓ Damage to horticulture and standing crops in some areas due to inundation.
 - ✓ It may lead to riverine flooding in some river catchments (for riverine flooding please visit Web page of CWC)

Action Suggested

- ✓ Fishermen are advised not venture into Northeast & adjoining Eastcentral Arabian Sea and along & off Gujarat & adjoining Pakistan and north Maharashtra Coasts till 30th August.
- ✓ Fishermen are advised not to venture into North Bay of Bengal and along & off North Odisha, West Bengal, Bangladesh coasts on 26th August.
- ✓ Judicious regulation of offshore/onshore Operations.
- ✓ Check for traffic congestion on your route before leaving for your destination.
- ✓ Follow any traffic advisories that are issued in this regard.
- ✓ Avoid going to areas that face the water logging problems often.
- ✓ Avoid staying in vulnerable structure.

Agromet advisories for Heavy Rainfall likely over various parts of the country

- Drain out excess water from field crops and horticultural crops in Rajasthan, West Madhya Pradesh, Chhattisgarh, Gujarat State, Gangetic West Bengal, Odisha, Jharkhand, Coastal and South Interior Karnataka Konkan & Goa, .
- Make provision for draining out excess water from standing crop fields and fruit orchards to avoid water stagnation in Jammu & Kashmir, East Uttar Pradesh and Telangana.
- Drain out excess water from *kharif* rice, groundnut, sesame, soybean, ginger, turmeric and vegetables to prevent water logging in **Mizoram**; from pigeon pea, soybean, cotton and sesame crop fields in **Saurashtra & Kutch**; from rice, finger millet, groundnut, pulses and orchards in **Konkan & Goa**; from rice, pigeon pea, cotton, black gram, green gram, soybean, groundnut etc. in **North Madhya Maharashtra**; from rice, castor, cotton, pearl millet, groundnut, sesame and maize fields in **Gujarat**; from rice, maize, green gram, black gram, soybean, sesame and vegetable fields in **Rajasthan**.
- Due to prolonged heavy rainfall, transplanted *Aman* rice and vegetable crops in low-lying areas of **Tripura** are submerged, with young rice seedlings unlikely to recover. It is recommended to procure short-duration rice varieties for re-sowing after the cessation of rains, or alternatively, prepare in advance for winter vegetable cultivation.
- Provide mechanical support to horticultural crops & staking to vegetables.

Flash Flood Guidance:

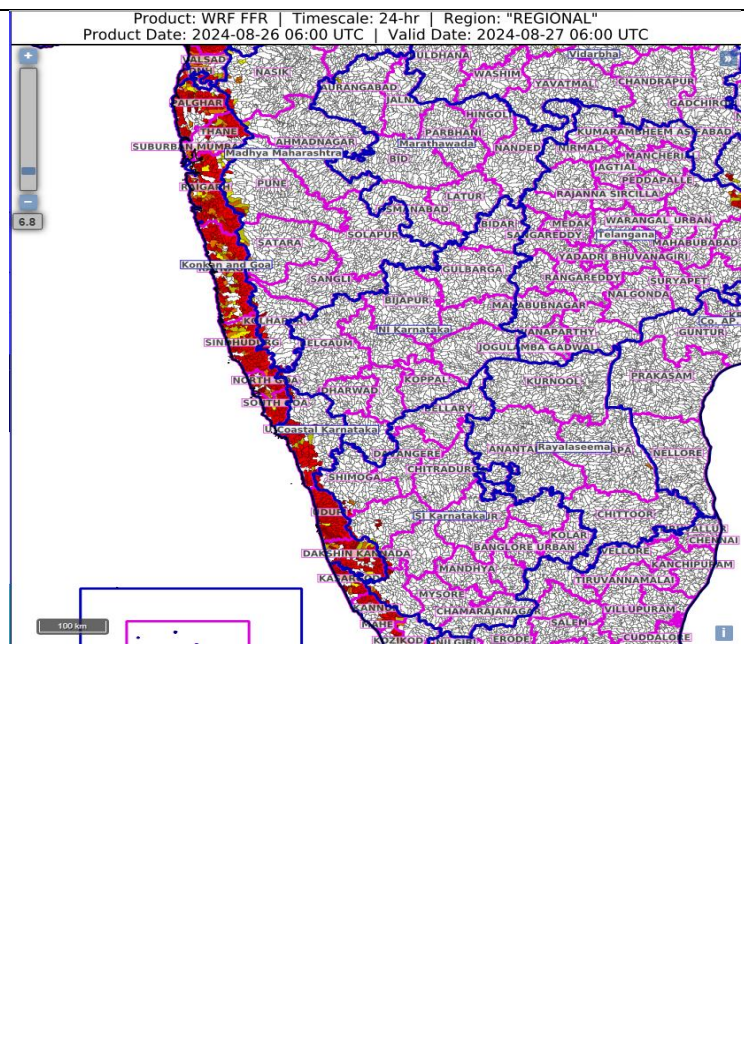
24 hours Outlook for the Flash Flood Risk (FFR) till 1130 IST of 27-08-2024 :

Low to Moderate flash flood risk likely over few watersheds & neighbourhoods of following Met Sub-divisions during next 24 hours.

Coastal Karnataka - Dakshin Kannada, Udupi and Uttar Kannada districts. Kerala & Mahe - Kannur, Kasargod and Kozikod districts.

Konkan & Goa - North Goa, South Goa, Mumbai City, Palghar, Raigarh, Ratnagiri, Sindhudurg, Suburban Mumbai and Thane districts.

Surface runoff/ Inundation may occur at some fully saturated soils & low-lying areas over AoC as shown in map due to expected rainfall occurrence in next 24 hours.



24 hours Outlook for the Flash Flood Risk (FFR) till 1130 IST of 27-08-2024 :

High flash flood risk likely over few watersheds & neighbourhoods of following Met Sub-divisions during next 24 hours.

East Rajasthan - Banswara, Dungarpur and Pratapgarh districts.

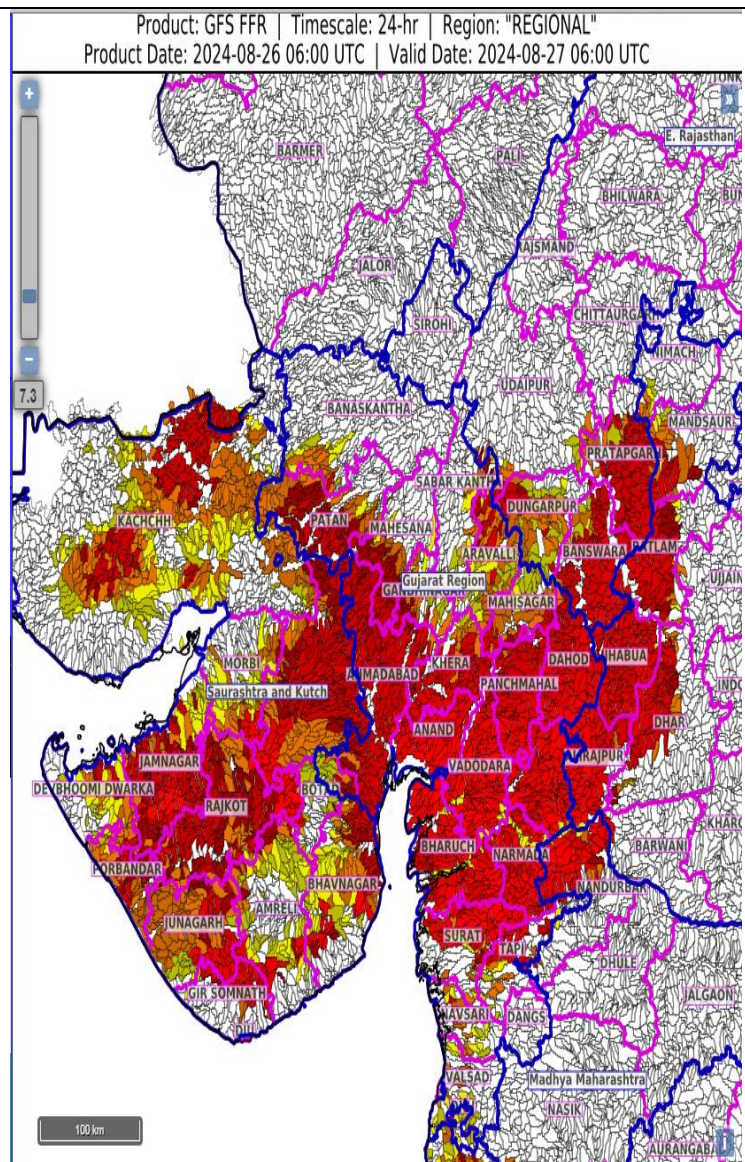
West Madhya Pradesh - Alirajpur, Dhar, Jhabua, Mandsaur and Ratlam districts.

Gujarat Region - Dadar & Nagar Haveli, Daman, Ahmadabad, Anand, Aravalli, Bharuch, Chhota Udepur, Dahod, Gandhinagar, Khera, Mahesana, Mahisagar, Narmada, Navsari, Panchmahal, Patan, Sabar Kantha, Surat, Tapi, Vadodara and Valsad districts.

Madhya Maharashtra - Nandurbar district.

Saurashtra & Kutch - Amreli, Bhavnagar, Botad, Devbhoomi Dwarka, Diu, Gir Somnath, Jamnagar, Junagarh, Porbandar, Rajkot, Surendranagar, Morbi and Kachchh districts.

Surface runoff/ Inundation may occur at some fully saturated soils & low-lying areas over AoC as shown in map due to expected rainfall occurrence in next 24 hours.

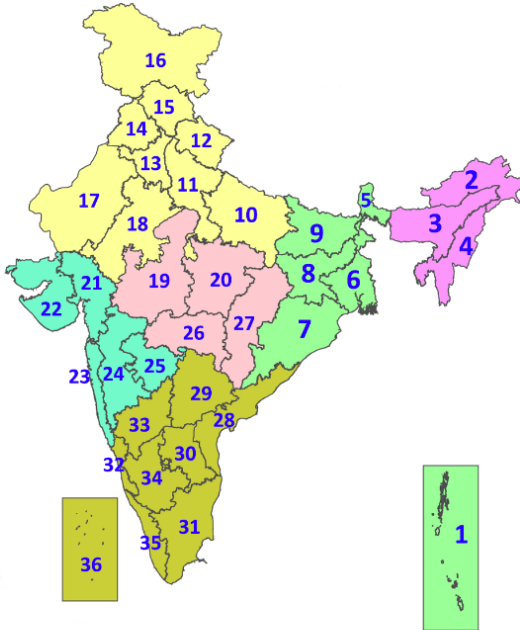


Legends & abbreviations:

- ❖ **Heavy Rain:**64.5-115.5mm; **Very Heavy Rain:**115.6-204.4mm; **Extremely Heavy Rain:** >204.4mm.
- ❖ **Obsy:** Observatory; **AWS:** Automatic Weather Station; **ARG:** Automatic Rain Gauge; **dist:** District; **NH:** National Highway; **KVK:** Krishi Vigyan Kendra; **DVC:** Damodar Valley Corporation; **PTO:** Part Time Office, **Aero:** Aerodrome, **IAF:** Indian Air Force.
- ❖ **Region wise classification of meteorological Sub-Divisions:**
 - **Northwest India:** Western Himalayan Region (Jammu-Kashmir-Ladakh-Gilgit-Baltistan-Muzaffarabad, Himachal Pradesh and Uttarakhand); Punjab, Haryana-Chandigarh-Delhi; West Uttar Pradesh, East Uttar Pradesh, West Rajasthan and East Rajasthan.
 - **Central India:** West Madhya Pradesh, East Madhya Pradesh, Vidarbha and Chhattisgarh.
 - **East India:** Bihar, Jharkhand, Sub-Himalayan West Bengal & Sikkim; Gangetic West Bengal, Odisha and Andaman & Nicobar Islands.
 - **Northeast India:** Arunachal Pradesh, Assam & Meghalaya and Nagaland, Manipur, Mizoram & Tripura.
 - **West India:** Gujarat Region, Saurashtra & Kutch, Konkan & Goa, Madhya Maharashtra and Marathawada.

LEGENDS

1. अंडमान और निकोबार द्वीपसमूह
2. अरुणाचल प्रदेश
3. असम और मेघालय
4. नागालैंड, मणिपुर, मिजोरम और त्रिपुरा
5. उप-हिमालयी पश्चिम बंगाल और सिक्किम
6. गंगीय पश्चिम बंगाल
7. ओडिशा
8. झारखंड
9. बिहार
10. पूर्वी उत्तर प्रदेश
11. पश्चिम उत्तर प्रदेश
12. उत्तराखंड
13. हरियाणा, चंडीगढ़ और दिल्ली
14. पंजाब
15. हिमाचल प्रदेश
16. जम्मू और कश्मीर और लद्दाख
17. पश्चिम राजस्थान
18. पूर्वी राजस्थान
19. पश्चिम मध्य प्रदेश
20. पूर्वी मध्य प्रदेश
21. गुजरात
22. सौराष्ट्र
23. कोंकण और गोवा
24. मध्य महाराष्ट्र
25. मराठवाड़ा
26. विदर्भ
27. छत्तीसगढ़
28. तटीय आंध्र प्रदेश और यनम
29. तेलंगाना
30. रायलसीमा
31. तमिलनाडु, पुडुचेरी और कराईकल
32. तटीय कर्नाटक
33. आंतरिक उत्तरी कर्नाटक
34. आंतरिक दक्षिणी कर्नाटक
35. केरल और माहे
36. लक्षद्वीप



1. Andaman & Nicobar Islands
2. Arunachal Pradesh
3. Assam & Meghalaya
4. Nagaland, Manipur, Mizoram & Tripura
5. Sub-Himalayan West Bengal & Sikkim
6. Gangetic West Bengal
7. Odisha
8. Jharkhand
9. Bihar
10. East Uttar Pradesh
11. West Uttar Pradesh
12. Uttarakhand
13. Haryana, Chandigarh & Delhi
14. Punjab
15. Himachal Pradesh
16. Jammu & Kashmir and Ladakh
17. West Rajasthan
18. East Rajasthan
19. West Madhya Pradesh
20. East Madhya Pradesh
21. Gujarat
22. Saurashtra
23. Konkan & Goa
24. Madhya Maharashtra
25. Marathwada
26. Vidarbha
27. Chhattisgarh
28. Coastal Andhra Pradesh & Yanam
29. Telangana
30. Rayalaseema
31. Tamilnadu, Puducherry & Karaikal
32. Coastal Karnataka
33. North Interior Karnataka
34. South Interior Karnataka
35. Kerala & Mahe
36. Lakshadweep

SPATIAL DISTRIBUTION (% of Stations reporting)

% Stations	Category	% Stations	Category
76-100	Widespread (WS/Most Places)	26-50	Scattered (SCT/A Few Places)
51-75	Fairly Widespread (FWS/Many Places)	1-25	Isolated (ISOL)

- | | | |
|----------------------|----------------------|--------------|
| Fog | Heavy Snow | Cold Wave |
| Heavy Rain | Dust Storm | Cold Day |
| Very Heavy Rain | Heat Wave | Ground Frost |
| Extremely Heavy Rain | Warm Night | |
| Thunder & Lightning | Hot Day | |
| Hailstorm | Hot & Humid | |
| Dust Raising Winds | Strong Surface Winds | |

COLOUR CODED WARNING

No Warning (No Action)
Watch (Be Aware)
Alert (Be Prepared To Take Action)
Warning (Take Action)

Probabilistic Forecast

Terms	Probability of Occurrence (%)
Unlikely	< 25
Likely	25 - 50
Very Likely	50 - 75
Most Likely	> 75

* Red colour warning does not mean "Red Alert", Red colour warning means "Take Action".

Forecast and Warning for any day is valid from 0830 hours IST of day till 0830 hours IST of next day.

For more details, kindly visit <https://mausam.imd.gov.in> or contact: 011-2434-4599

(Service to the Nation since 1875)

DEFINITION/CRITERIA

Rain/ Snow *	<p>Heavy: 64.5 to 115.5 mm/cm *</p> <p>Very Heavy: 115.6 to 204.4 mm/cm*</p> <p>Extremely Heavy: > 204.4 mm/cm *</p>
Heat Wave	<p>When maximum temperature of a station reaches $\geq 40^{\circ}\text{C}$ for plains and $\geq 30^{\circ}\text{C}$ for hilly regions</p> <p>(a) Based on Departure from normal</p> <p>Heat Wave: Maximum Temperature Departure from normal 4.5°C to 6.4°C.</p> <p>Severe Heat Wave: Maximum Temperature Departure from normal $\geq 6.5^{\circ}\text{C}$</p> <p>(b). Based on Actual maximum temperature</p> <p>Heat Wave: When actual maximum temperature $\geq 45^{\circ}\text{C}$.</p> <p>Severe Heat Wave: When actual maximum temperature $\geq 47^{\circ}\text{C}$</p> <p>(c). Criteria for heat wave for coastal stations</p> <p>When maximum temperature departure is $> 4.5^{\circ}\text{C}$ from normal. Heat Wave may be described provided maximum temperature $\geq 37^{\circ}\text{C}$</p>
Warm Night	<p>When maximum temperature remains 40°C</p> <p>Warm Night: When minimum temperature departure 4.5°C to 6.4°C.</p> <p>Severe Warm Night: When minimum temperature departure $> 6.4^{\circ}\text{C}$.</p>
Cold Wave	<p>When minimum temperature of a station $\leq 10^{\circ}\text{C}$ for plains and $\leq 0^{\circ}\text{C}$ for hilly regions.</p> <p>(a). Based on departure</p> <p>Cold Wave: Minimum Temperature Departure from normal -4.5°C to -6.4°C.</p> <p>Severe Cold Wave: Minimum Temperature Departure from normal $\leq -6.5^{\circ}\text{C}$</p> <p>(b) Based on actual Minimum Temperature (for Plains only)</p> <p>Cold Wave : When Minimum Temperature is $\leq 4.0^{\circ}\text{C}$</p> <p>Severe Cold Wave: When Minimum Temperature is $\leq 2.0^{\circ}\text{C}$</p> <p>(c) For Coastal Stations</p> <p>When Minimum Temperature departure is $\leq -4.5^{\circ}\text{C}$ & actual Minimum Temperature is $\leq 15^{\circ}\text{C}$</p>
Cold Day	<p>When minimum temperature of a station $\leq 10^{\circ}\text{C}$ for plains and $\leq 0^{\circ}\text{C}$ for hilly regions</p> <p>Based on departure</p> <p>Cold Day: Maximum Temperature Departure from normal -4.5°C to -6.4°C.</p> <p>Severe Cold Day: Maximum Temperature Departure from normal $\leq -6.5^{\circ}\text{C}$</p>
Fog	<p>Phenomenon of small droplets suspended in air and the horizontal visibility $< 1\text{km}$</p> <p>Moderate Fog: When the visibility between 500-200 metres</p> <p>Dense Fog: when the visibility between 50- 200 metres</p> <p>Very Dense Fog: when the visibility < 50 metres</p>
Thunderstorm	<p>Sudden electrical discharges manifested by a flash of light (Lightning) and a sharp rumbling sound (thunder)</p>
Dust/Sand Storm	<p>An ensemble of particles of dust or sand energetically lifted to great heights by a strong and turbulent wind.</p>
Frost	<p>Ice deposits on ground</p> <p>Air temperature $\leq 4^{\circ}\text{C}$ (over Plains)</p>
Squall	<p>A strong wind that rises suddenly, lasts for atleast 1 minute.</p> <p>Moderate: Wind speed 52-61 kmph</p> <p>Severe: Wind speed 62-87 kmph</p> <p>Very Severe: Wind speed > 87 kmph</p>
Sea State	<p>Effect of various waves in the sea over specific area</p> <p>Rough to very rough: Wind speed 41-62 kmph (22-33 knots) & Wave height 2.5-6 metre</p> <p>High to very high: Wind speed 63-117 kmph (34-63 knots) & Wave height 6-14 metre</p> <p>Phenomenal: Wind speed > 117 kmph (> 63 knots) & Wave height > 14 metre</p>
Cyclone	<p>Cyclonic Storm: Wind speed 62-87 kmph (34-47 knots)</p> <p>Severe Cyclonic Storm: Wind speed 88-117 kmph (48-63 knots)</p> <p>Very Severe Cyclonic Storm: Wind speed 118-165 kmph (64 - 89 knots)</p> <p>Extremely Severe Cyclonic Storm: Wind speed 166-220 kmph (90 -119 knots)</p> <p>Super Cyclone Strom: Wind speed > 220 kmph (> 119 knots)</p>

* Red colour warning does not mean "Red Alert", Red colour warning means "Take Action".
Forecast and Warning for any day is valid from 0830 hours IST of day till 0830 hours IST of next day.
For more details, kindly visit <https://mausam.imd.gov.in> or contact: 011-2434-4599
(Service to the Nation since 1875)